

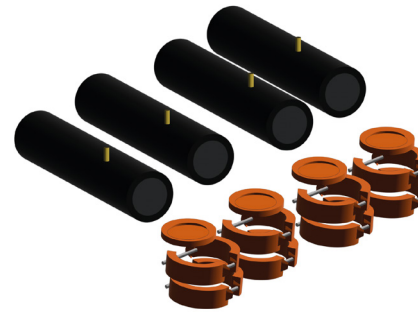


Air Conditioning
a member of **DAIKIN** group

CLIM WATER FAMILY INSTALLATION KITS

CONTENT PER KIT:

| 5002098 | | START / END KIT | |
|----------|--|---|--|
| Quantity | | Description | |
| 8 | | VITAU LIC 2 1/2" COUPLING | |
| 4 | | VITAU LIC NIPL E 2 1/1" X 12 5/8" WITH THREAD | |
| 4 | | THERMOWELL | |
| 4 | | VITAU LIC PLUG 2 1/2" | |



| 5002097 | | MIDDLE KIT | |
|----------|--|-----------------------------------|--|
| Quantity | | Description | |
| 8 | | VITAU LIC 2 1/2" COUPLING | |
| 4 | | VITAU LIC NIPL E 2 1/2" X 12 1/2" | |





Air Conditioning
a member of **DAIKIN** group



| 10 - 12.5 Ton | | |
|---------------|-----------------|--------------|
| Quantity | Desc | Model Number |
| 1 | START / END KIT | 5002098 |

| 40 Ton | | |
|----------|-----------------|--------------|
| Quantity | Desc | Model Number |
| 1 | START / END KIT | 5002098 |
| | MIDDLE KIT | 5002097 |



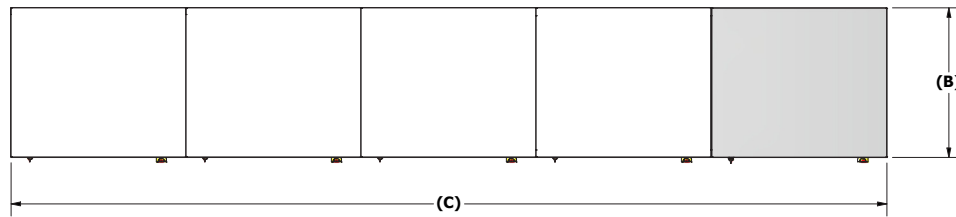
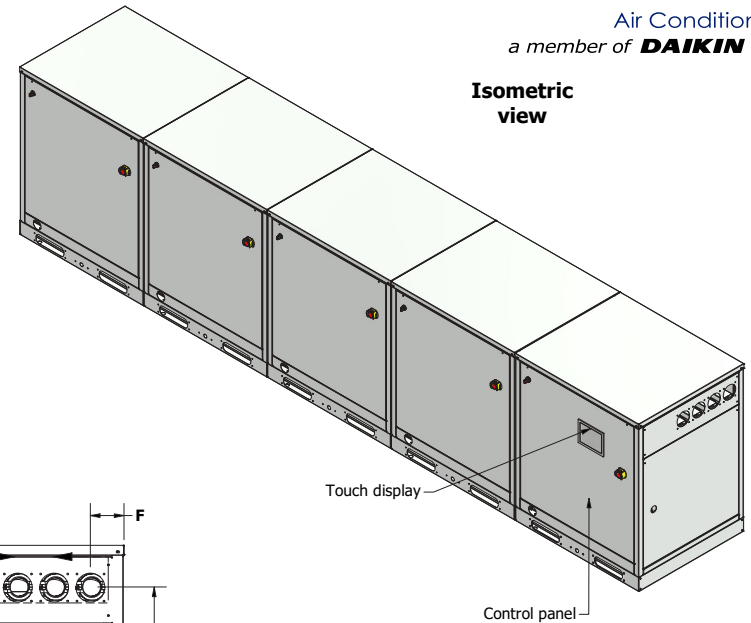
| 20 - 25 Ton | | |
|-------------|-----------------|--------------|
| Quantity | Desc | Model Number |
| 1 | START / END KIT | 5002098 |
| 1 | MIDDLE KIT | 5002097 |

| 50 - 62.5 Ton | | |
|---------------|-----------------|--------------|
| Quantity | Desc | Model Number |
| 1 | START / END KIT | 5002098 |
| 4 | MIDDLE KIT | 5002097 |

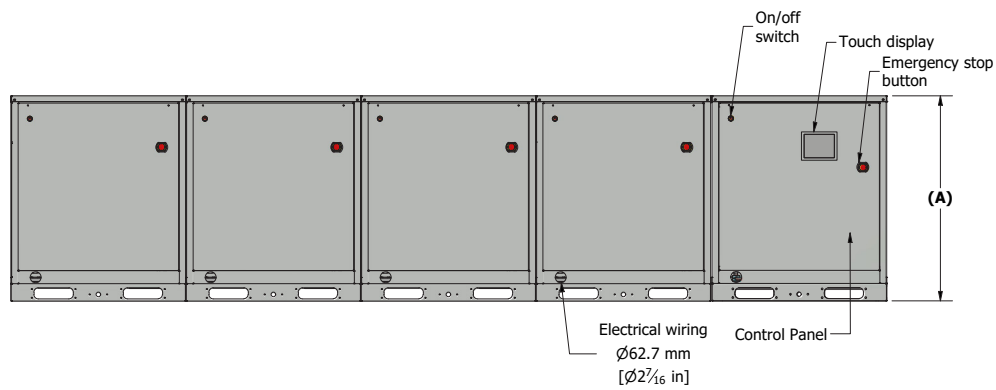


| 30 Ton | | |
|----------|-----------------|--------------|
| Quantity | Desc | Model Number |
| 1 | START / END KIT | 5002098 |
| 2 | MIDDLE KIT | 5002097 |

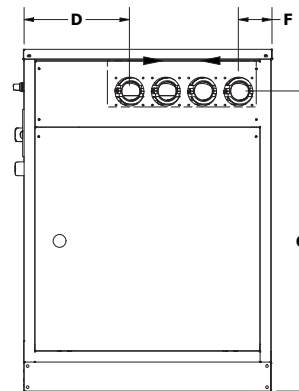
Isometric view



Top view



Front view



Right side view

| TANDEM COMBINATIONS | | | | | |
|---------------------|---------|---------|---------|---------|---------|
| Unit Size | 52.5 TR | 55 TR | 57.5 TR | 60 TR | 62.5 TR |
| MASTER | 10 TR | 10 TR | 10 TR | 10 TR | 12.5 TR |
| SLAVES | 12.5 TR | 12.5 TR | 12.5 TR | 12.5 TR | 12.5 TR |
| | 10 TR | 12.5 TR | 12.5 TR | 12.5 TR | 12.5 TR |
| | 10 TR | 10 TR | 12.5 TR | 12.5 TR | 12.5 TR |
| | 10 TR | 10 TR | 10 TR | 12.5 TR | 12.5 TR |